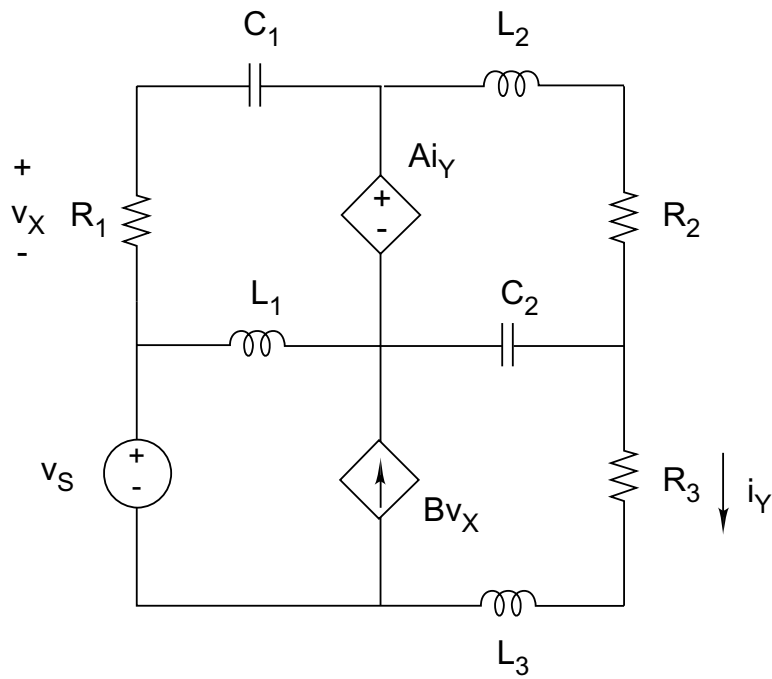
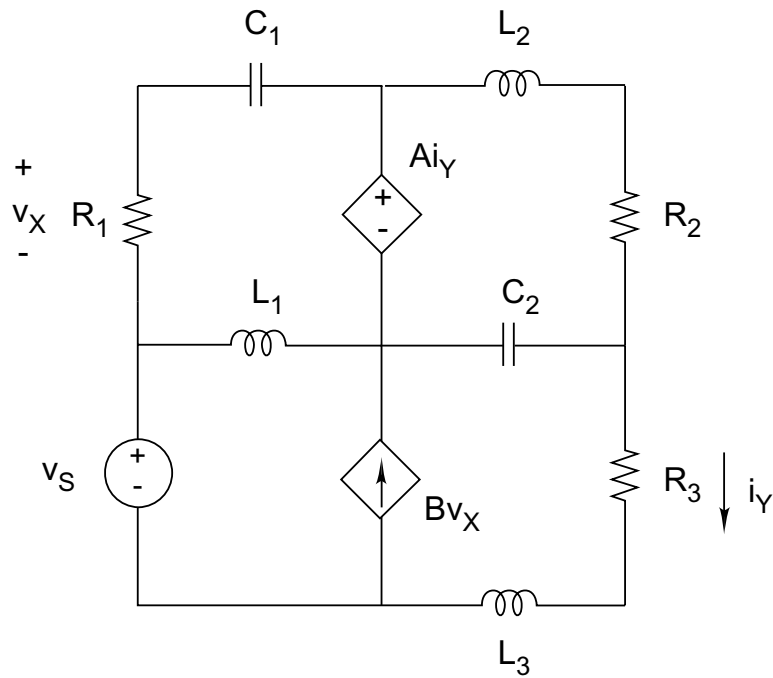


More notes on the test: although you may (or may not) have a calculator that can handle complex numbers, be sure you know how to convert between polar and rectangular forms!



$$v_s = V_A \cos \omega t$$

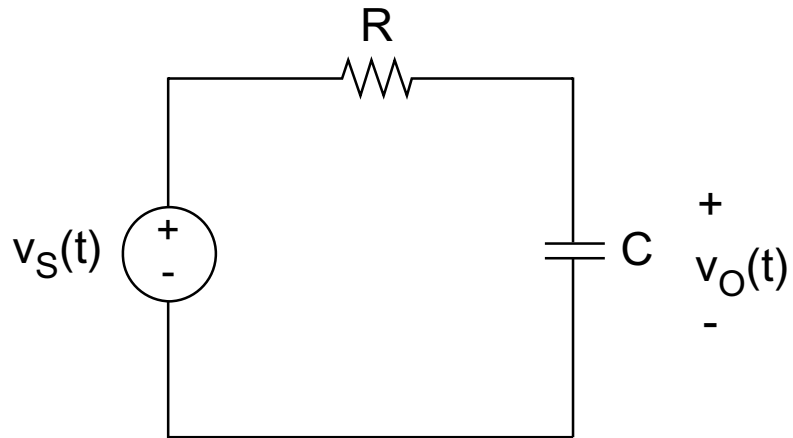
Set up the equations to solve for node voltages

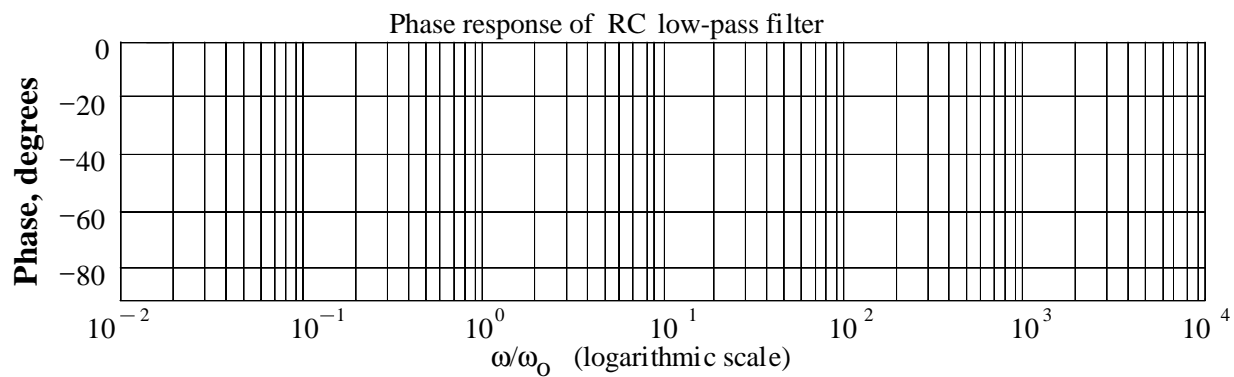
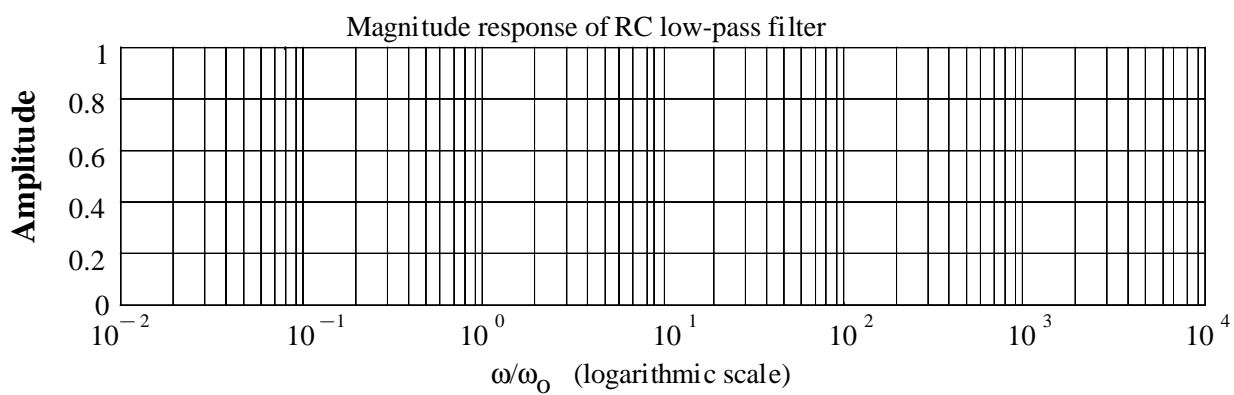
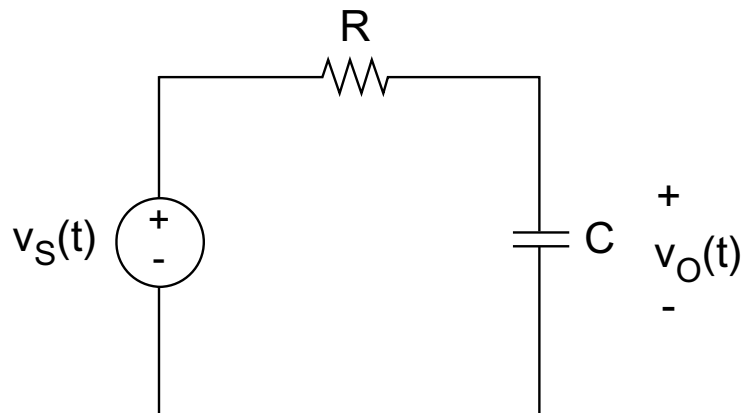


$$v_s = V_A \cos \omega t$$

Set up the equations to solve for mesh currents

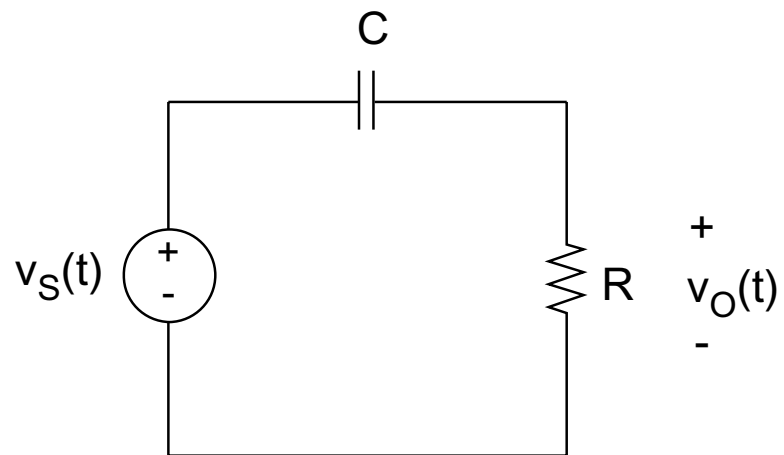
How low can you go?

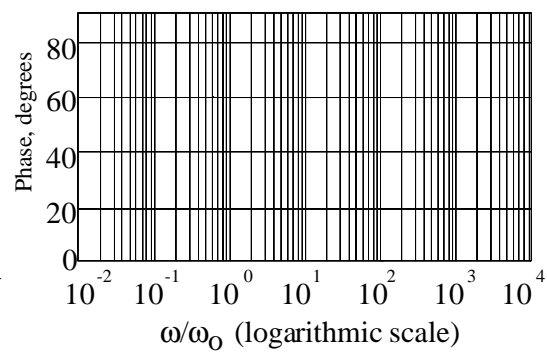
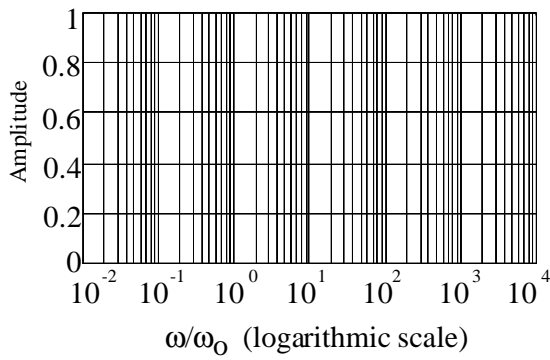
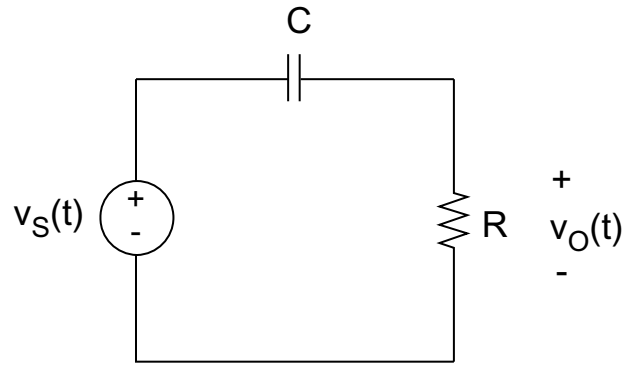




	0	$0.01*\omega$	$0.1*\omega$	ω	$10*\omega$	$100*\omega$	$1000*\omega$
$ H(j\omega) $							
$\angle H(j\omega)$							

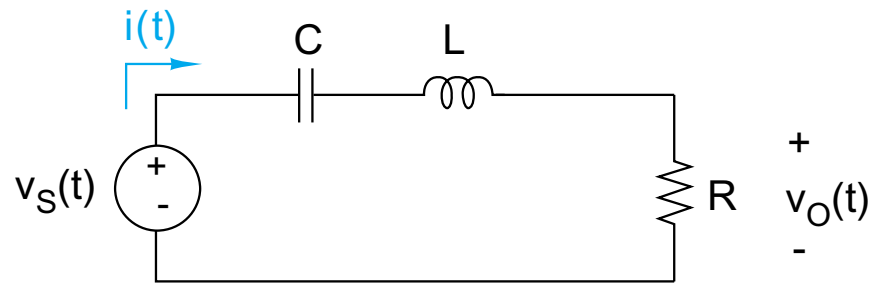
Let's get high (don't even think it)

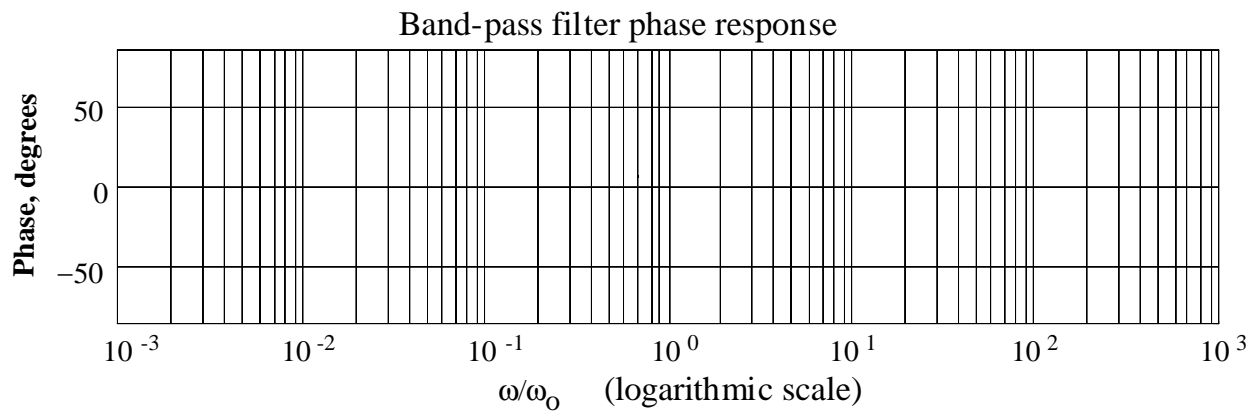
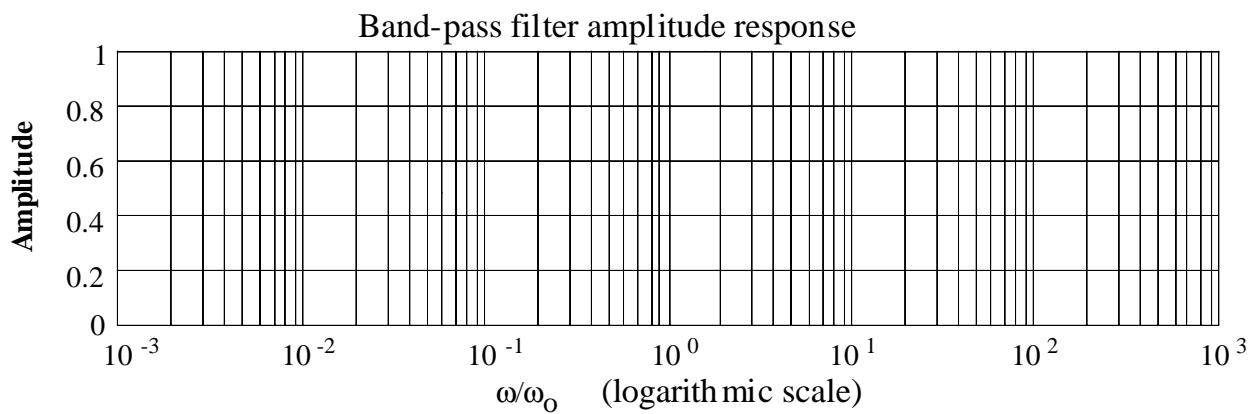
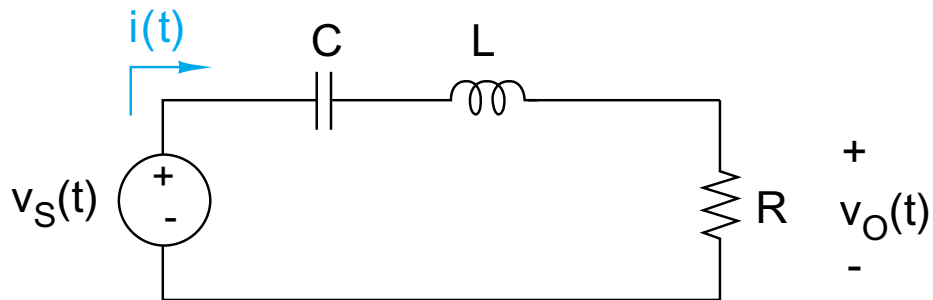




	0	$0.01*\omega$	$0.1*\omega$	ω	$10*\omega$	$100*\omega$	$1000*\omega$
$ H(j\omega) $							
$\angle H(j\omega)$							

Hey, at this point, I just hope I pass...





	0	$0.01 \cdot \omega$	$0.1 \cdot \omega$	ω	$10 \cdot \omega$	$100 \cdot \omega$	$1000 \cdot \omega$
$ H(j\omega) $							
$\angle H(j\omega)$							