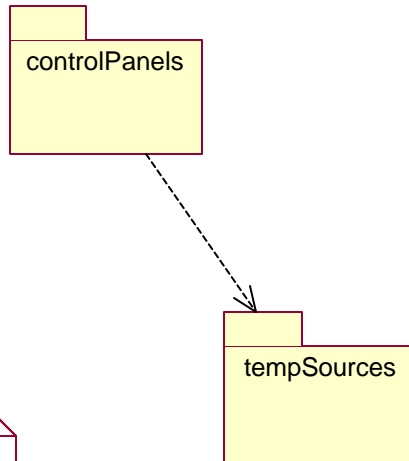
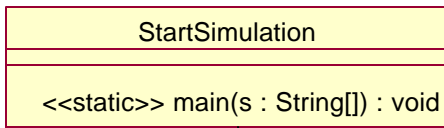


package: default

observer2



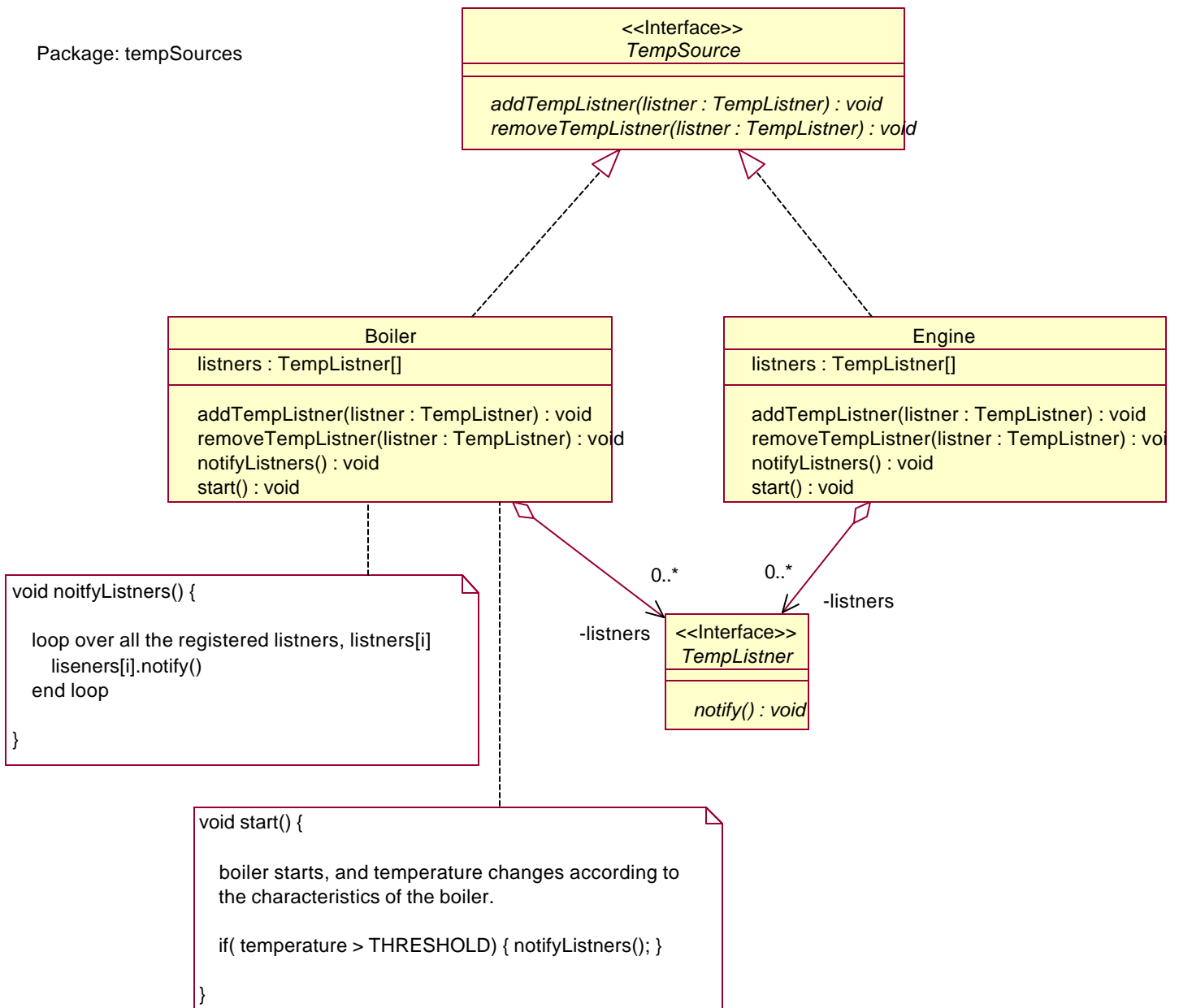
```
public static void main(String[] s) {

    TempSource mainBoiler = new Boiler();
    TempSource engineOne = new Engine();

    MasterPanel panel1 = new MasterPanel(mainBoiler);
    MasterPanel panel2 = new MasterPanel(engineOne);
    MasterPanel panel3 = new MasterPanel(engineOne);

    mainBoiler.start();
    engineOne.start();
}
```

Package: tempSources



package: controlPanels

