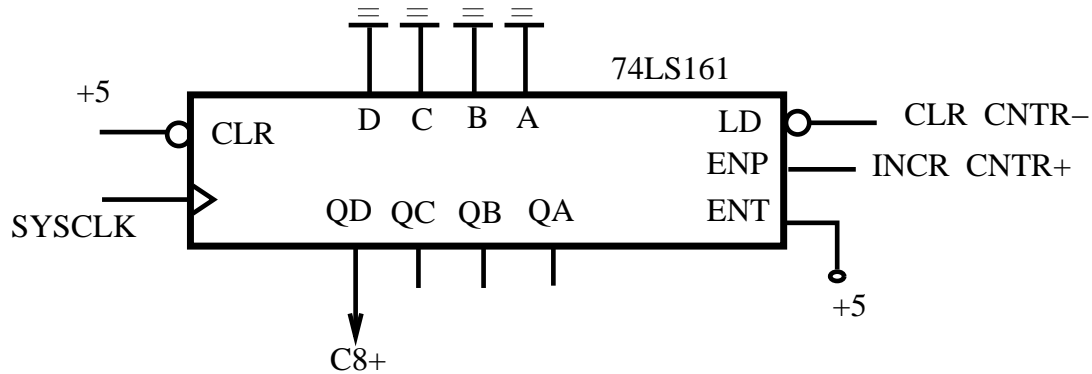


ECE 561: Digital Circuit Design

Homework #9

Problem:

Design the System Controller for the 2's Complement System with the following architectural changes:



Complete the following steps in the design:

1. System Controller Block Diagram,
2. State diagram,
3. State table, and
4. All other steps leading to a Logic Circuit Diagram (NAND's & D flip/flops).
5. Finish with a timing diagram.